

Linear ACCESS™

Residential Telephone Entry by Linear



America's gatekeeper.

Linear at the gate.

Linear's Residential Telephone Entry systems are an unparalleled marriage of style and technology — products that both make a strong statement and perform an essential function.

In terms of design, the RE-1 and RE-2 are unlike any other residential entry product on the market. Uniquely styled and available in a choice of powder coated nickel or stainless steel — they have all the characteristics of a high-end, architectural-grade, custom-designed system. Simple, striking, and trend-setting, the RE-1 and RE-2 do more for home owners than provide a means for screening visitors and granting access to their residence. They convey a subtle statement of affluence. They send a message to guests arriving at the gate that they have come to a place of importance.

Functionally, the RE-1 and RE-2 bring the cutting edge of access technology to residential entry applications. They are the epitome of access control merged with convenience, from their full complement of voice response capabilities to their built-in receiver, auxiliary control functions, and optional closed-circuit television monitoring feature.

Linear at the gate says it all. And has it all.

CAST HOUSING MEANS LASTING BEAUTY.

Linear's residential telephone entry system is the first to utilize cast stainless steel for its inherent strength and striking appearance. This housing can take hits from both Mother Nature and vandals and maintain its functional integrity and good looks. As an alternative to this stainless housing, the RE-1 and RE-2 also come in cast zinc with a powder coated nickel finish.

White down lighting that is both dramatic and practical is provided by an extremely long-life white LED source. The use of surface mount technology (SMT) for all electronic components minimizes the effects of interference from electro static discharge and protects against damage from lightning strikes.



CONTROL FUNCTIONS BEYOND THE GATE.

Both systems have two built in general purpose relays for maximum system functionality. One can be used for the control relay and the other for a myriad of auxiliary control functions, including activation of safety edge reverse, external lighting, or alarm shunting.

MEGACODE INSIDE. TELEPHONE ENTRY WITH WIRELESS!



The RE-1 and RE-2 are the only telephone entry systems presently available offering a built-in wireless receiver as standard equipment. But this is not just any wireless receiver. It's the MegaCode radio by Linear, the people who pioneered radio frequency based security and access control. The famous MegaCode unit allows the use of handheld, visor clip, and keychain transmitters (the industry's largest selection) to achieve additional remote control over gates and garage door openers. Its code selection from over one million factory-set possibilities that cannot be changed in the field assures the highest protection against code theft and duplication.

VOICE PROMPTS. USER FRIENDLY, OWNER FRIENDLY.



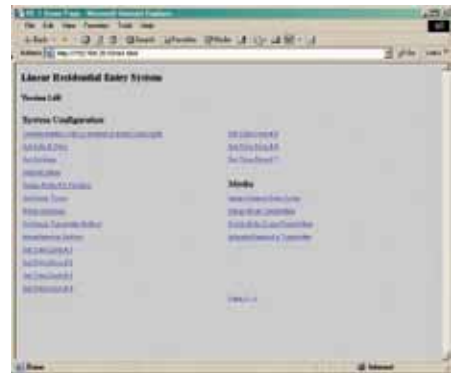
Synthesized voice capabilities are built into the system to provide instructions for system users/owners, and to provide prompts for visitors, making the system extremely easy to operate. The voice response system also provides confirmation during remote programming via touch-tone telephone and local programming.

VERSATILE TELEPHONE INTEGRATION.

The system can call up to three pre-programmed off-site numbers; it can generate call waiting tones; and it can call forward via time zone or resident command.

For on-premises communications, the systems have a number of valuable integration options. For a property with multiple entrances, guest houses, or separate apartments, any of these locations can be called, because up to seven systems can share the same telephone line and provide communication functions. In addition, a separate INTERCOM mode allows connection to a PBX telephone system or a separate residential intercom system via just a pair of wires.

SOPHISTICATED YET SIMPLE PROGRAMMING.



Ease of installation is very much a part of the system concept. Providers can use a standard web browser to program the unit, thus eliminating the need for special software. Programming can also be accomplished from the keypad or via a touch-tone telephone.

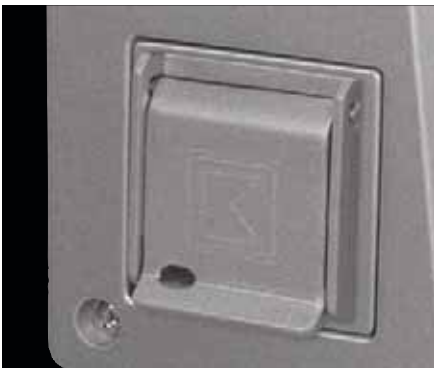
User programming is equally easy. For example, time zone programming is provided to determine the time and/or day residents are active. Options are also provided to lock out prank calls in the middle of the night, and to lock or open doors and gates as needed.

OPTIONAL VIDEO CAMERA. THE ULTIMATE CALLER ID.



Each system can be field upgraded with a closed circuit television package that greatly enhances each unit's capabilities. The RE-1 supports a Model RE-BWC black & white camera, the RE-2 supports the Model CCM-2 color camera. Each miniature camera installs neatly inside the system with a covered lens window for camera protection and to provide an unobtrusive, non-intimidating appearance. Also, the RE-1 features infrared illuminators to ensure clear black & white images in low light conditions. In addition, Linear offers a Model CPDM-1 digital television modulator to inject the camera's video signal onto a custom television channel that can be viewed on a single television, or on multiple television sets.

MORE OPTIONS FOR A FULL- FEATURED SYSTEM.



The unique cast housing of the system has provisions for the integration of a Knox lock for applications requiring a means for emergency access onto the property. This feature eliminates the need for an unsightly separate lock box, thus preserving the RE-1 and RE-2's outstanding aesthetics.



For residences with a second drive entrance, a service entrance, or additional vehicle gates or walk gates, auxiliary keypads are available to provide entrance control. These keypads, part of Linear's access control product line, are also valuable when there is a need to have a keypad code to exit the property.

Finally, driveway sensing can be provided for with a loop detector to trigger the system to announce a vehicle at the gate or to activate a relay to provide more light at the gate.

MORE THAN SINGLE- DWELLING CAPACITY.

The RE-1 and RE-2 are not limited to residential applications. With their capacity for 100 entry codes and their ability to support up to 100 transmitters they are ideal for sites such as employee parking lots and commercial parking garages. Premises entry can be via keypad as well as transmitter. System activity may be monitored and logged (450 event capacity) for retrieval via computer.

CONTROL ACCESS AND COMMUNICATIONS FROM ANY TELEPHONE, EVEN OFF-SITE



Granting access and controlling the gate operator is as easy as dialing the telephone. Both access relays can be individually controlled using a TouchTone® telephone. If the access gate needs to be opened,

without a call from a visitor, any telephone in the house can be used to open the gate by keying in a five digit code pattern. The telephone codes can be used to latch or release either of the access relays,

If an unexpected visitor arrives, or is seen at the entry area with the system's optional CCTV camera, a code from any on-site telephone can activate the system's 2-way audio communication circuitry. This is an outstanding feature allows remote monitoring and speaking to the entry system area with the unit's high-gain microphone and speaker.

Off-site, anywhere in the World, a telephone can be used to control the access relays. The system uses a programmable 6-digit password to authorize access for the remote telephone control functions.

NO ONE HOME? FORWARD THE CALL FOR ACCESS



The call forwarding feature allows a visitor to contact the resident at a programmed telephone number instead of through the on-site telephones. The feature can be set to be active during a selected time (set with the system's seven unique time zone schedules) or at all times. The telephone number programmed can contain an extension number and an optional time delay before dialing the extension.

The call forwarding feature can also be set to call the on-site telephones first, then if there's no answer, place a call to the programmed forwarding telephone number. During the forwarded call, the access relays can be controlled simply by using the telephone's keypad.



RE-1 NICKEL



RE-1 STAINLESS STEEL



RE-2 STAINLESS STEEL



RE-2 NICKEL

General Specifications

OUTPUTS

Relay: two form "C" relays rated at 3A @ 30 Vac or Vdc, each programmable for control, obstacle, alarm or shunt

Sounder: programmable for key presses and relay activation

Voice: synthesized human voice prompts for visitor and programming assistance; voice is heard through speaker and remote telephones

INPUTS

Antenna: RE-1 built in, RE-2 external

Call Button: push button input used to initiate communications

RF: integral 318 MHz super heterodyne receiver @ -100dBm sensitivity (typical); receives Linear block coded transmitters and MGT supervised safety edge transmitters

Open Request: terminal input for each relay; when activated, will trigger the assigned relay for the programmed relay on time

Door Sense/Inhibit: terminal input for each relay monitors status of a protected entry point or can be programmed to restrict access to the assigned relay

Keypad: 12 digit telephone style keypad for accepting entry codes and for local programming

Power: 16 Vac (transformer included); input for externally charged 12 to 24 Vdc battery backup

Current Draw (dialing out to one phone):

16 Vac: 270 mA standby
440 mA operating

12 Vdc: 250 mA standby
500 mA operating

24 Vdc 150 mA standby
300 mA operating

Operating Temperature: -22°F to 149°F (-30°C to 65°C)

PROGRAMMING

Locally via keypad; remotely via touchtone telephone or computer with modem running a web browser;
NO SOFTWARE REQUIRED

Memory: all data memory is stored in non volatile EEPROM with data retention in excess of 10 years

Clock/Calendar: 24/7 clock/calendar with battery backup used for time zones; relay hold open times; date/time stamp for event log entries; downlight on/off times

Connections: all power, telephone, relay and control connections to the unit are with plug on screw terminal blocks; RJ-45 and BNC connections for optional camera kit

STANDARD EQUIPMENT

RE-1 and RE-2: residential telephone entry systems that are capable of sharing an existing phone line, a dedicated line, and dialing out up to 3 additional off site numbers or used as an intercom; integral keypad used to accept entry codes; integral radio receiver will accept signals from block coded transmitters; built-in clock calendar; voice prompts; accepts one remote keypad; provisions for dealer installed (not included) Knox switch; telephone bypass switch

AVAILABLE ACCESSORIES

RE-BWC: RE-1 field upgradable black & white CCTV camera which includes infrared illuminators for clear picture in low/no light conditions; powered by the RE-1

CCM-2: RE-2 field upgradable color CCTV camera; powered by the RE-2

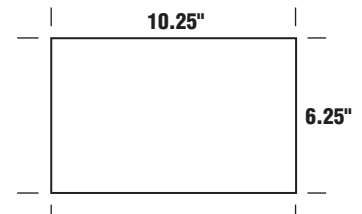
CPDM-1 Digital Modulator: Converts camera video signal to a UHF or CATV channel television signal

AM-KP: auxiliary wired keypad used for accepting entry codes to control a second door or gate

Block Coded Transmitters: programming remotes into the RE-1's integral radio receiver can be done with just a few keystrokes

RE-2 Trim Rings

- For the RE-2N use trim-ring P/N ACP00915
- For the RE-2SS use trim-ring P/N ACP00917



Trim-ring hole dimensions

Linear®