

License Plate Inventory System

Reduce fraudulent ticket usage by tracking vehicle license plate numbers

Inventory Control

The Federal APD, Inc., License Plate Inventory (LPI) System puts control at your fingertips, the system

consists of an LPI Hand Held computer running a custom LPI program. By using our ScanNet[®], Central Management System with the LPI option you receive current information on vehicles entering and exiting your parking facility. This is accomplished by entering the vehicle license plate number along with location of vehicle in the parking facility into the Hand Held computer and transferring this information to ScanNet. This information is used to track the movement, location and duration of time of stay for each vehicle.

LPI Hand Held Software

Federal APD installs LPI Hand Held software into this device and can customize the program to fit your system and application requirements. The computer contains an LCD touch screen and keypad for both entering and displaying information in the LPI device.

LPI Hand Held System Components

The LPI System consists of the following components:

- **ScanNet LPI Software Option** - The LPI component ScanNet is the central storage and retrieval area for LPI data records and reports. The logic within the system compares the current inventory with previously recorded inventory to determine the total number of days each vehicle has parked, where the vehicle is located and whether the vehicle remains in the parking facility or has exited.
- **LPI Hand Held Computer** - The LPI computer is a device that allows you to retrieve inventory records and lot configuration data from ScanNet. Your inventory data, can be compiled and then transferred back to ScanNet where data is collected and printed out into detailed reports for your review.

Parking Facility Structure Overview (see reverse side for more information)

The LPI System provides the parking facility with the following levels:

- **Lot** - A section of a parking facility or area that a vehicle will enter into and exit out of.

Features:

- **8 MB FLASH memory and provision for non-volatile storage memory (16 or 32 MB) that translates from two to four working days of typical use before recharging the LPI Hand Held Computer.**
- **Sealed container reducing dust and water.**
- **LCD, back lighted, touch screen.**
- **Highly-ergonomic keypad, with 54 multi-function keys including direct access function keys, cursors, ESC, CTL, ALT and TAB keys. Alphanumeric keys with a large, independent, numeric keypad. Intelligent key grouping to speedup data collection.**
- **Withstands a 2.2 yard (2 meter) drop onto concrete.**
- **Inventory by Lot or Space.**
- **Rugged monochrome screen.**



FEDERAL APD

Federal Signal Corporation

www.federalapd.com



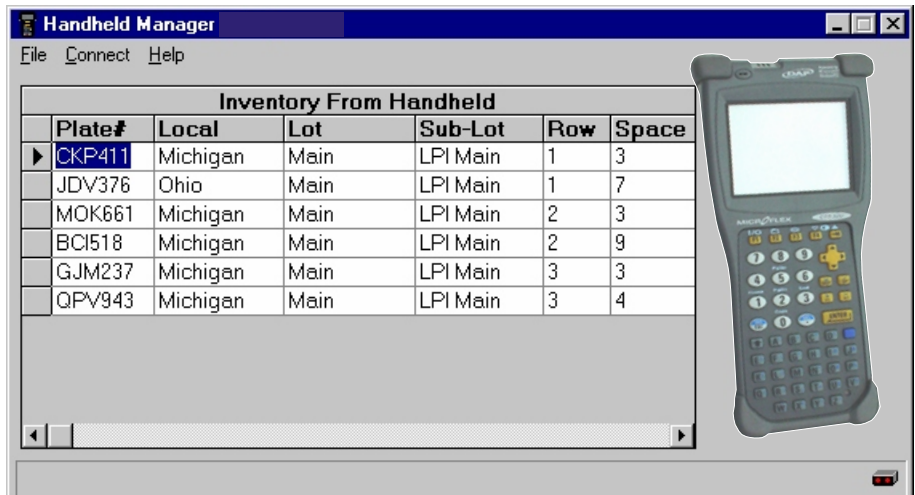
- **Sub-lot/Section** - This can be either a section as defined as a subset of a lot or a sub-lot.
- **Row** - A division within a lot or sub-lot area. A row contains a specific number of spaces.
- **Space** - A space is the actual physical points where a vehicle parks.

Specifications:

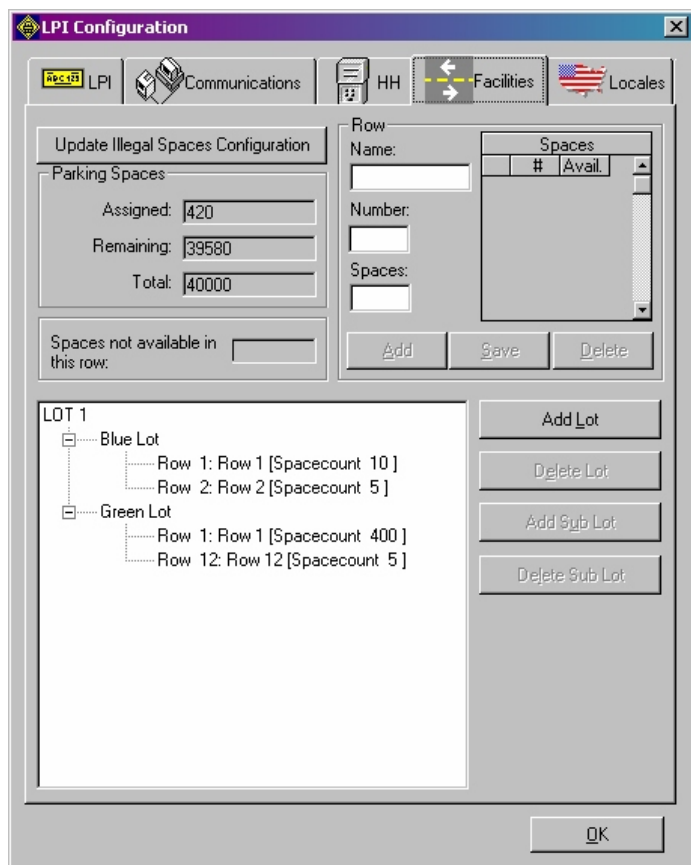
- Windows CE 3.00 operating system executed in FLASH memory to minimize RAM usage.
- 206 Mhz processor.
- IP67 and shock resistant.
- Operates in temperatures ranging from -4° F (-20° C) to 122° F (50° C).
- Inventory by Lot or Space.
- Weight of 1.96 lb., with batteries installed.
- Dimensions 1.53 inches to 2.36 inches H x 3.53 inches to 4.08 inches W x 9.74.inches L.

Note: for additional information please refer to the following documents:

- ScanNet Operators Manual
- LPI Data Collection Manual



ScanNet Hand Held Manager



ScanNet LPI Configuration



Distributed by:

ITR of Georgia
 3346 Montreal Station, Tucker, GA 30084
 800-367-6177, Fax 770-939-6962
www.itrofgeorgia.com